

## JCB Construction Plant Case Study

J.C. Bamford Excavators Limited, universally known as JCB, is a British multinational corporation, with headquarters in Rocester, Staffordshire, manufacturing equipment for construction, agriculture, waste handling and demolition. Deploying a JCB wheel loader, back hoe, loading shovel or excavator makes your material handling and loading jobs safer, faster, more precise and more profitable.

### The Problem

A safe working at height platform is necessary for JCB work shop and field-based maintenance engineers to carry out repairs. Maintenance tasks are a high priority, for example servicing, which includes regular inspections of engines, gearboxes and hydraulics, identifying faults and repairing or replacing faulty parts and carrying out routine servicing of plant and equipment.

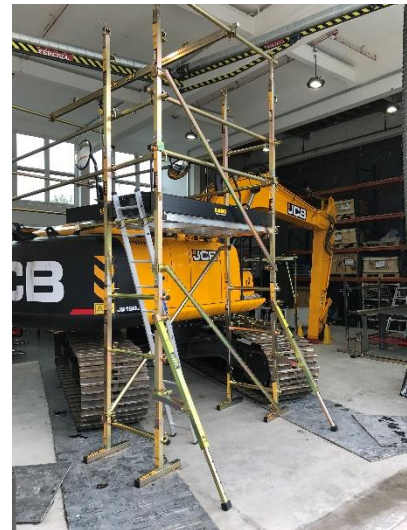
### The Solution

The LOBO Advanced Platform System is a perfect working at height product that offers the solution and provides a safe, sturdy and quick to assemble system around, under and over any construction plant machinery.

The LOBO System is a versatile work platform product that combines the flexibility and strength of traditional scaffolding with the simplicity and mobility of tower systems.

This combination provides the ultimate access system that can be utilised across all maintenance industries and no assembly tools are required.

The system is particularly useful if you have awkward and restricted areas to reach.



LOBO can be easily configured to fit all JCB construction plant products.

The LOBO System comprises of trestle legs that vary in size, with adjustable top and fixed side clamps. Steel or aluminium tubes are then passed through the clamps; the clamps are hand tightened to form a trestle. Sway braces, wheels, handrails, out riggers, adjustable extensions and even a lifting beam can be added to enhance the construction.

[www.lobosystems.com](http://www.lobosystems.com)

#### Conformities

EU: BS EN1004:2004 BS 1139 parts 3 & 4,  
USA: OSHA Compliant, ANSI A10.8, 29 CFR Part 1920 (General Industry)  
Canada: CSA Z797-09 CSA 269.2 (M87 and -16)  
Australia: AS/NZS 1576.1:2010 and AS/NZS 1576.3:2015 Tower





*40-minute assembly time*

The LOBO System can be transported from site and assembled with ease from a flat pack to any required configuration, by your own vehicle mechanics.

### Product Benefits

- a) LOBO is scalable, adaptable and adjustable to meet your on-going and changing requirements. Simply add more components or alter your existing configuration to satisfy the demands of the next task. Protect your initial investment with a product that will meet all your access needs safely!
- b) LOBO is a rigid and stable product, which meets or exceeds current safety regulations. Handrails can be fitted in seconds, at any point in the erection process.



[www.lobosystems.com](http://www.lobosystems.com)

### Conformities

EU: BS EN1004:2004 BS 1139 parts 3 & 4,  
USA: OSHA Compliant, ANSI A10.8, 29 CFR Part 1920 (General Industry)  
Canada: CSA Z797-09 CSA 269.2 (M87 and -16)  
Australia: AS/NZS 1576.1:2010 and AS/NZS 1576.3:2015 Tower



*20-minute assembly time*

- c) LOBO's steel structure ensures many years of product life cycle and a system that will not shake or rattle. The system also includes a slider lifting beam kit and a Towerstore storage unit.
- d) LOBO's modular approach means components fully integrate and are light enough to be hand carried. Fully constructed systems can also be made mobile by the addition of wheels.

**Cost Benefits**



*20 minute assembly time*

JCB engineers have found by experience that deploying the LOBO System, reduces the costs associated with hiring scaffolding and constructing bespoke access systems. By reducing their reliance on out-sourced scaffolding and engineering companies, cost savings will be achieved – easily in a 12-month period.

With this quantifiable reduction in costs comes the added savings associated with reduced down-time and greater productivity from JCB's maintenance department.

The around the clock availability means JCB engineers have an immediate adjustable access system for their jobs with no staff waiting time while scaffolders are engaged, or new fixed-frame structures are manufactured.

Re-configurable, again and again, this product comes with no disposal costs and minimal replacement and on-going training costs.



*40-minute assembly time*

[www.lobosystems.com](http://www.lobosystems.com)

**Conformities**

EU: BS EN1004:2004 BS 1139 parts 3 & 4,  
USA: OSHA Compliant, ANSI A10.8, 29 CFR Part 1920 (General Industry)  
Canada: CSA Z797-09 CSA 269.2 (M87 and -16)  
Australia: AS/NZS 1576.1:2010 and AS/NZS 1576.3:2015 Tower

